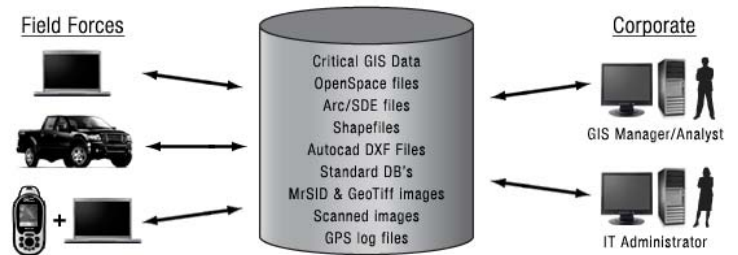


XMap Enterprise GIS

Affordable Full-Featured GIS Tools

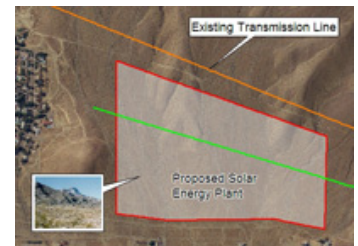
- § Increase the return on your GIS data investment with this powerful and easy-to-use GIS database management software. Interoperable with ESRI, MapInfo & AutoCAD file formats
- § Includes a full-featured GIS with GIS point, line, and polygon CAD tools, spatial queries, and Coordinate Geometry Support
- § Import ESRI shapefiles, AutoCAD DXF files, Excel spreadsheets, CSVfiles, MrSID & GeoTIFF files, scanned images, and GPX files
- § Supports Earthmate GPS PN-Series – Export MrSID & GeoTIFF aerial image files to a handheld GPS

Effective GIS Data Synchronization for the Mobile Workforce



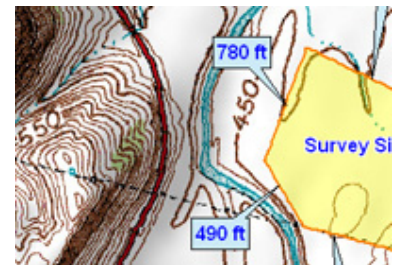
GIS Database Management

- § Automatically distribute GIS Data throughout your mobile workforce. Provide GIS layers access to your central GIS database for your field technicians supporting data verification checks and redlining
- § Synchronize remote databases. Apply check-out/check-in controls to protect database integrity
- § ArcSDE 9.2 import support for more efficient access to Corporate GIS databases
- § XMap GIS Enterprise enables the "Data Deployment Skeleton Key" for mass distribution of PN-series usable datasets
- § Share GIS views and GIS Queries for better decisions in the field



Information Technology Features

- § Enhanced corporate IT installation support with expanded permissions options and customizable network deployment options, including MSI support
- § Vista compliant for user permissions set-up
- § Licensed XMap GIS Enterprise users will have exclusive access to regular XMap Updates, Patches, and Quarterly Releases



Automation through XMap Application Programming Interface

- § New! Route optimization feature available through XMap API
- § Automate map processes with API access to routing, GPS navigation, and Map Control
- § API drives XMap 6 Mobile, a competitively priced GPS navigation software designed for the XMap API