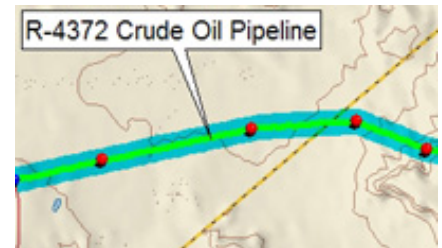


XMap 6 Professional Now Supports ESRI Shapefile Format

- Download and import shapefiles from GIS data archives
- Customize the symbology of point, line, and polygon layers
- Access all of the available attributes for each map object
- Search for specific records using XMap's Attribute Search function
- Turn specific layers on or off to create custom maps
- Transfer GIS layers and aerial imagery to DeLorme's Earthmate PN-Series handheld GPS receivers



Easy-to-Use Automatic Bulk Geo-Data Import Tool

- Easily import location based records, customer drop off points or contact databases

Work with a Variety of Raster Data Formats – Includes MrSid Support!

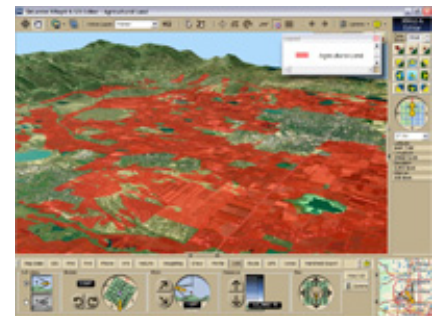
- Import your geoTIFF images for use within XMap

Work with XMap 6 GIS Enterprise and Editor Users

- View GeoSpatial queries created in XMap GIS products
- Synchronize data with your central GIS from the field

XMap Professional now includes:

- Street Atlas Handheld mapping & navigation for Windows Mobile 5.0/6.0 PDA's
- Includes GeoTiff and MrSid importer for raster imagery formats
- U.S. National Grid support with easy-to-read grid & zone identifiers
- Command-line bulk importer – Geocode records in GIS Tab
- View GeoSpatial queries created in XMap GIS products
- Perform field database updates in conjunction with XMap GIS software titles
- GPX file support – XML GPS drag & drop file import
- Latest DeLorme 3-D advances
- Completely updated USGS topographic maps, on DVD or CD
- 3-D view perspective options, GPS compatible
- Enhanced Terrain Profiling – track your speed and temperature vs. slope
- New! – Ability to pan in 3-D for rapid map redraws that create a seamless flyover experience
- Online MapShare Functionality – free and unlimited sharing of your 2-D and 3-D map views



Navigate to key GIS points using GPS Navigation:

Compatible with DeLorme Earthmate GPS receivers, Earthmate GPS PN-40, Earthmate GPS PN-20, and major-manufacturer GPS devices